

# INJECTORS



## REMAN 6.6L DURAMAX

POWER | RELIABILITY | EFFICIENCY

PurePower Technologies® is a leader in precision engineering and remanufacturing of air and fuel management components for OEMs and the aftermarket. Backed by years of OE heritage, we don't just assemble parts, we deliver solutions — with the capability to reengineer any diesel injector or turbo for the reman market and the flexibility to scale to any size production program.

### POWER YOUR BUSINESS WITH PURE POWER

- ✓ Low warranty limits headaches from returns
- ✓ Reliable fuel delivery ensures cold starts and happy customers
- ✓ OE level performance guarantees owner satisfaction
- ✓ Lower returns means more time to focus on growing your business

### QUALITY AND TESTING

- ✓ OEM heritage
- ✓ Remanufactured in an IATF certified facility
- ✓ Advanced end-of-line test for delivery, leakage and opening characteristics
- ✓ 100% performance testing of nozzles for flow, leakage and seat condition
- ✓ Assembled in a clean environment
- ✓ Unlimited miles, 1-year warranty

### VISIT US



PURE POWER TECHNOLOGIES  
1410 Northpoint Boulevard  
Blythewood, SC 29016

PHONE: 803.744.7020  
[sales@purepowertechnologies.com](mailto:sales@purepowertechnologies.com)  
[www.purepowertechnologies.com](http://www.purepowertechnologies.com)

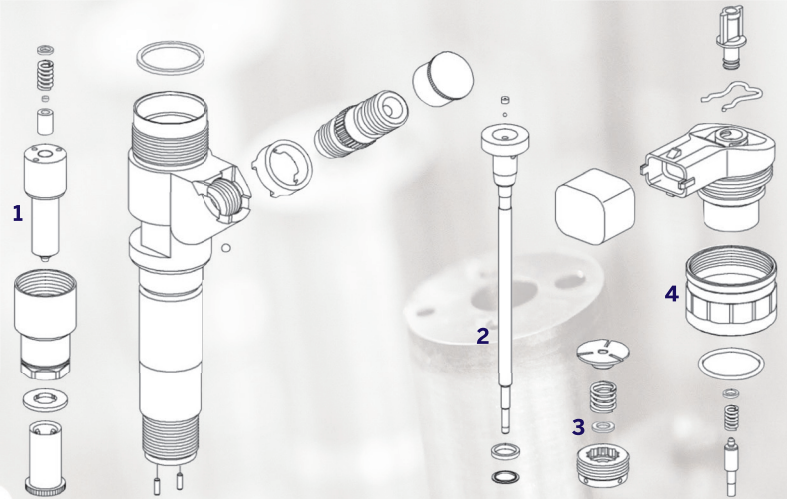
**purePOWER®**  
A STANADYNE® COMPANY



# FEATURES and APPLICATIONS

## THE PURE POWER ADVANTAGE

Component	Feature	Advantage
<b>1 Nozzle Assembly</b>	100% flow tested	Measured flow rate, leak and seat condition to validate injection consistency
<b>2 Valve body, control piston and ball</b>	100% inspected and tested	Reduced static and dynamic leak –maximizing power and efficiency
<b>3 Shim</b>	Proprietary shimming	High precision shimming for peak performance
<b>4 Solenoid assembly</b>	100% electrically tested	Preemptively identify failure and prevent calibration drift
<b>Injector</b>	100% disassembly, cleaning and assembly	OE cleanliness level – ultra cleaned for smooth operation
<b>Performance</b>	100% end of line testing	Performance tested to meet OE specifications for years of reliable operations



## PRODUCTS AND APPLICATIONS

Part #	Application	Reference
<b>7830-PP</b>	2001-2004 Chevrolet/GMC LB7 Silverado/Sierra/Kodiak/Topkick	0445120008 0986435502
<b>7838-PP</b>	2004-2006 Chevrolet/GMC LLY Silverado/Sierra/Kodiak/Topkick/H1 Alpha	0445120027 0986435504
<b>7839-PP</b>	2006-2007 Chevrolet/GMC LBZ Silverado/Sierra/Kodiak/Topkick/Express/Savana	0445120042 0986435521
<b>7840 -PP</b>	2007-2010 Chevrolet/GMC LMM Silverado/Sierra/Express/Savana	0445120082 0986435520

## CORE POLICY

All cores must be in re-buildable condition to receive a full refund of the core charge. Some core conditions cause partial or no credit. Pure Power determines credit deduction based on:

- ✓ Rust, water or fire damage
- ✓ Disassembly
- ✓ Missing component

## WARRANTY AND RETURN

Items sold by PurePower are warranted to be free from defects in material and workmanship for a period of **1 year and unlimited miles** from the date of invoice when used according to manufacturer's recommended usages.



**purePOWER**  
A STANADYNE® COMPANY